

# Chernarus Electrical Grid ArmA2 Script Pack and Addon

by Loyalguard



## Visual Guide

# Table of Contents

I. Grid Zone Map

II. Substation Power Flow Diagrams

III. Action Menu Circuit Breaker Overview

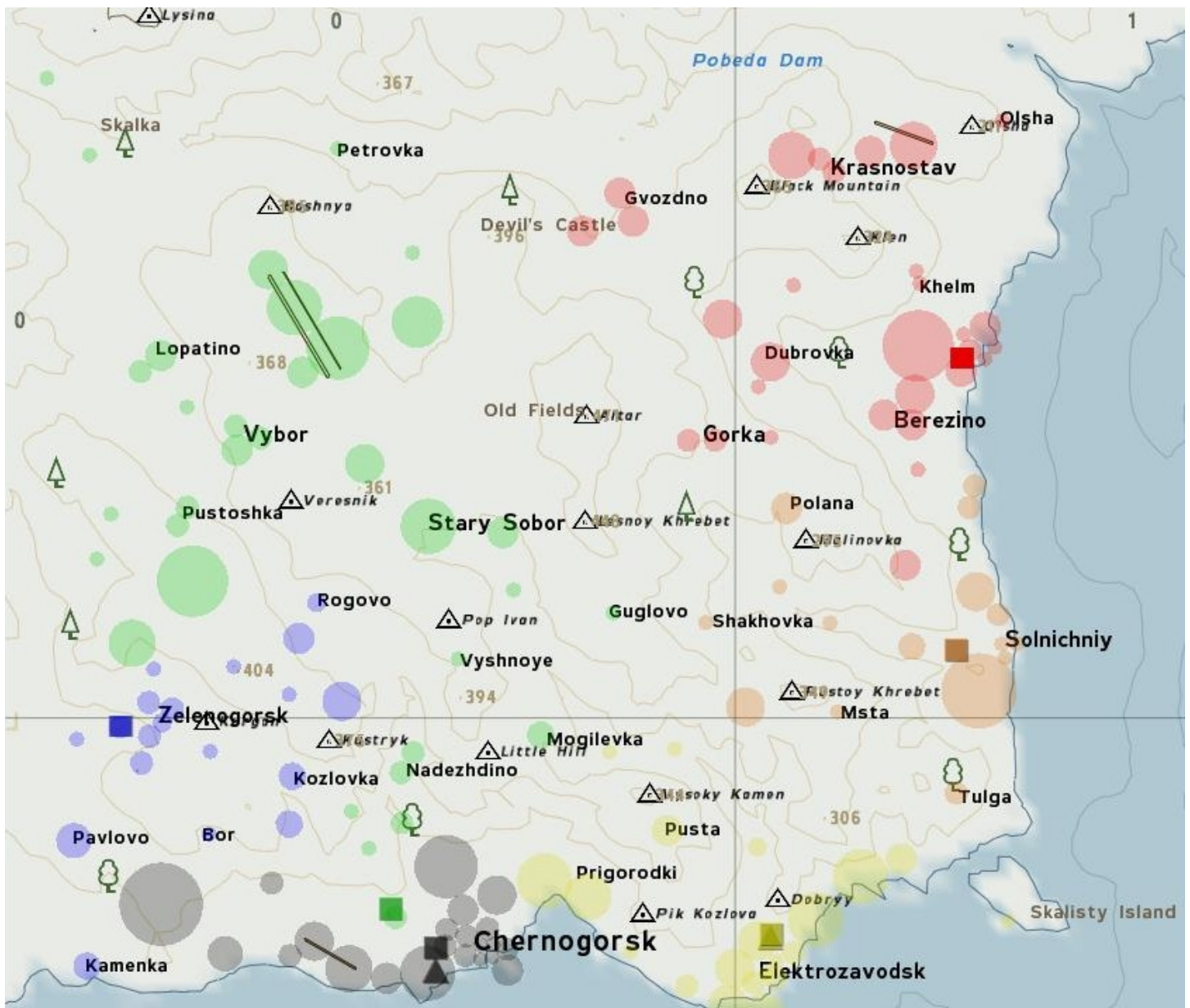
IV. Grid Control System Dialog Overview

# I. Grid Zone Map

Colored circles indicate electrical distribution zones.

Colored squares indicate substations that control power to zones of the same color.

Colored triangles indicate power plant locations. Each power plant has connections to multiple colored zones.

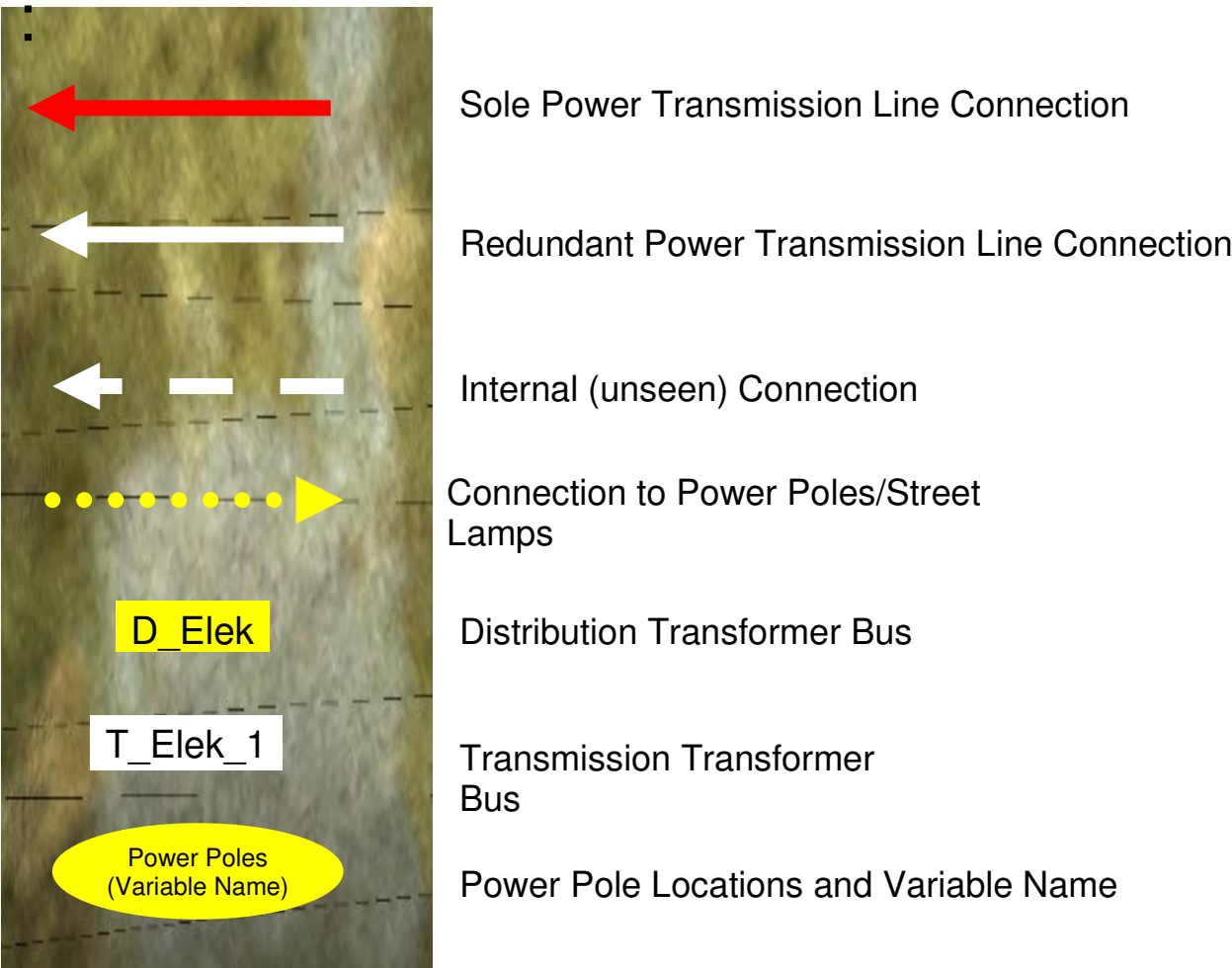


# II. Substation Power Flow Diagrams

The Diagrams on the following pages show how electrical power flows and how components are connected throughout the grid. The colors used correspond to the colors displayed on the CEG Zone Grid Map (and the CEG Demo Mission map) showing which areas are affected by specific substation transformers.

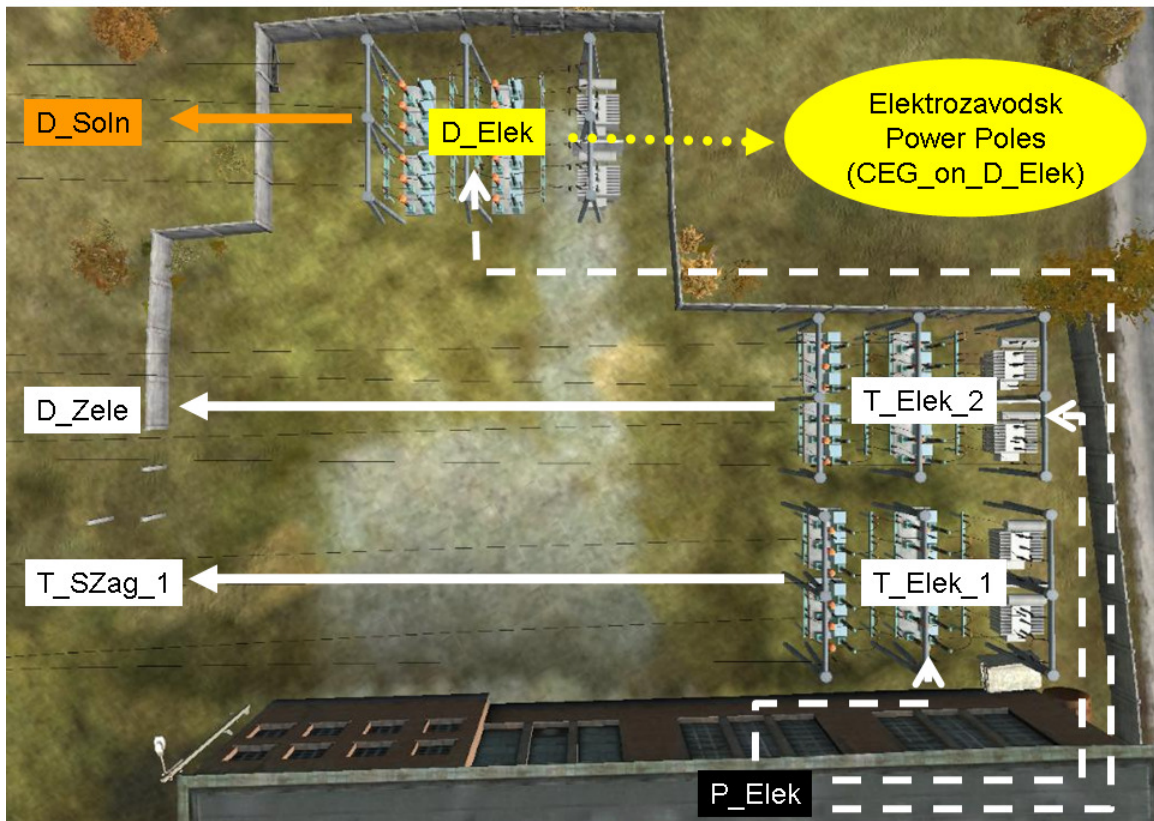
Below is a legend describing the various symbols used in the diagram:

## Legend

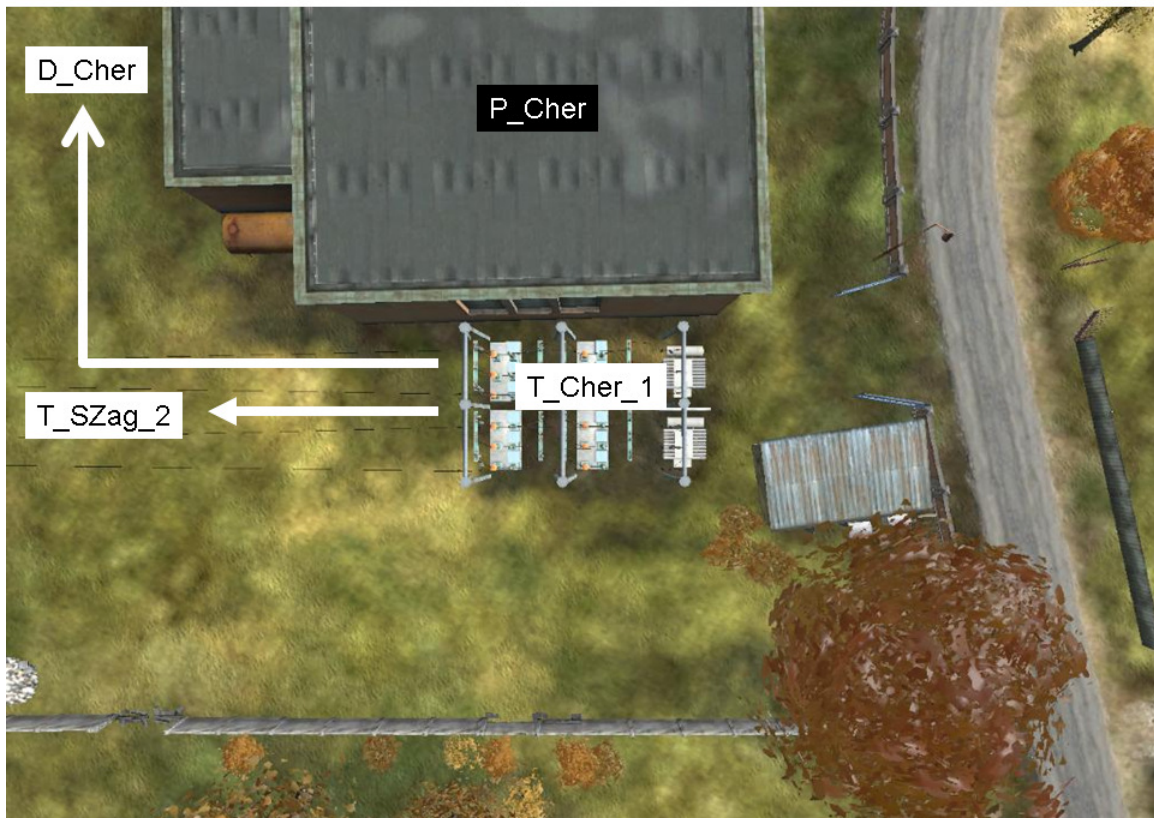




### Elektrozavodsk Power Plant

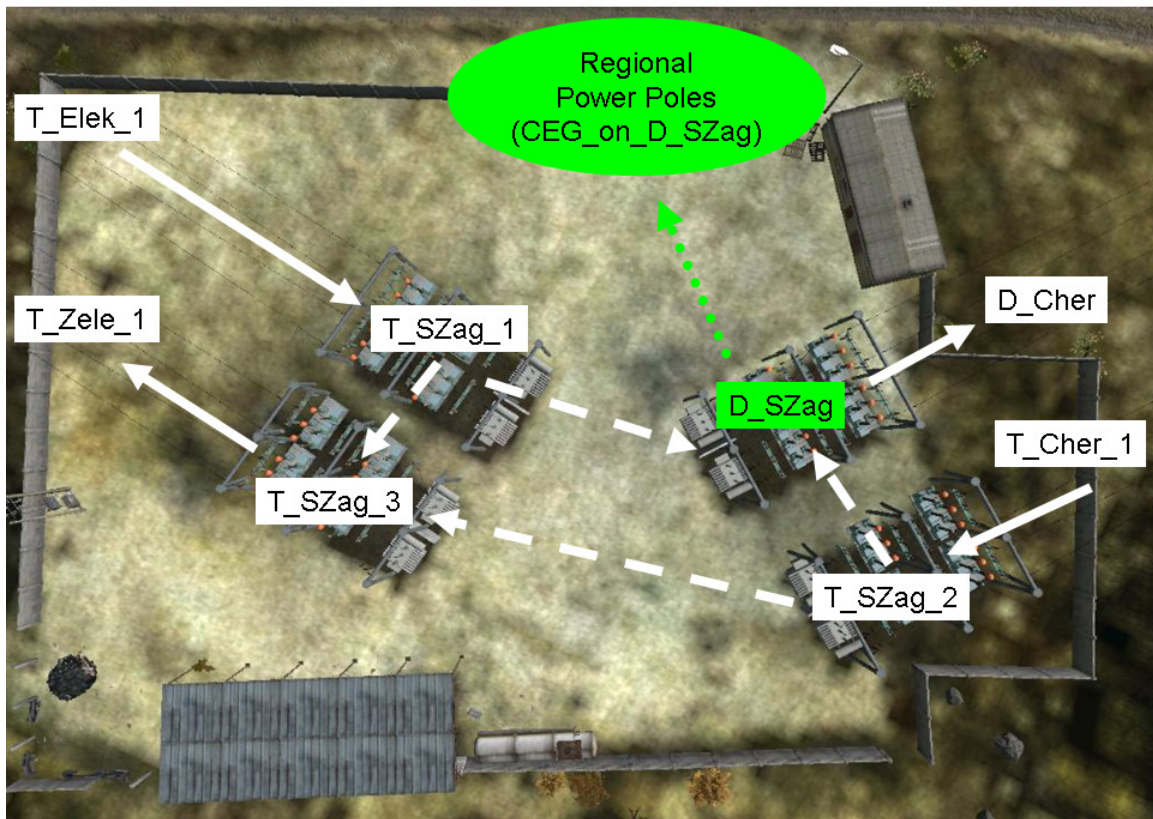


### Chernogorsk Power Plant

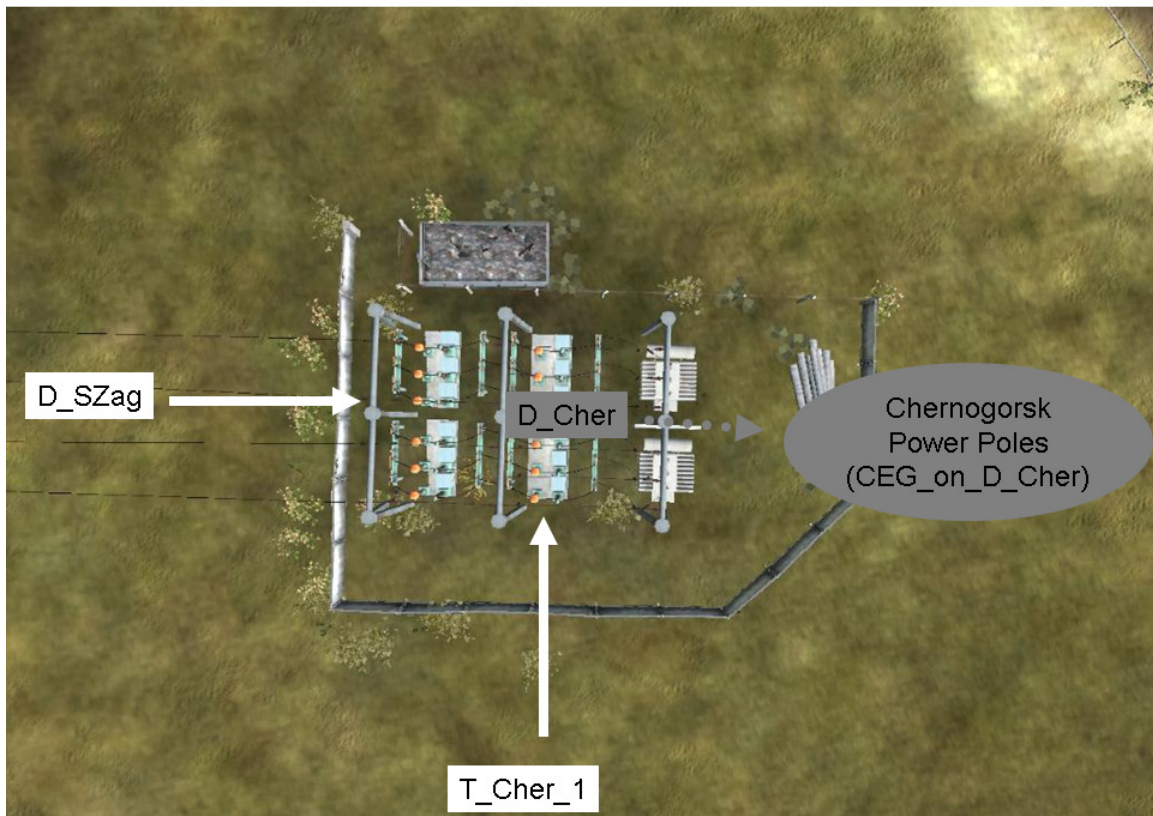




South Zagoria Regional Substation

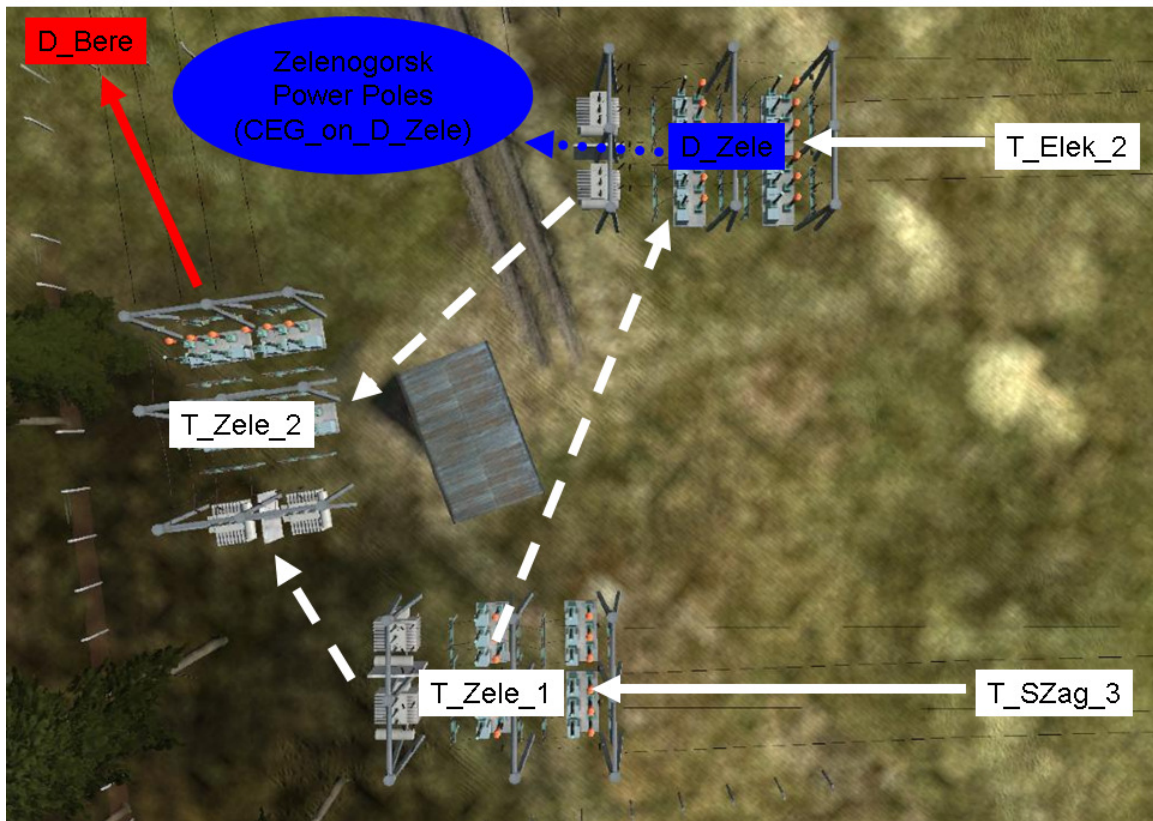


Chernogorsk Substation





### Zelenogorsk Substation



### Berezino Substation

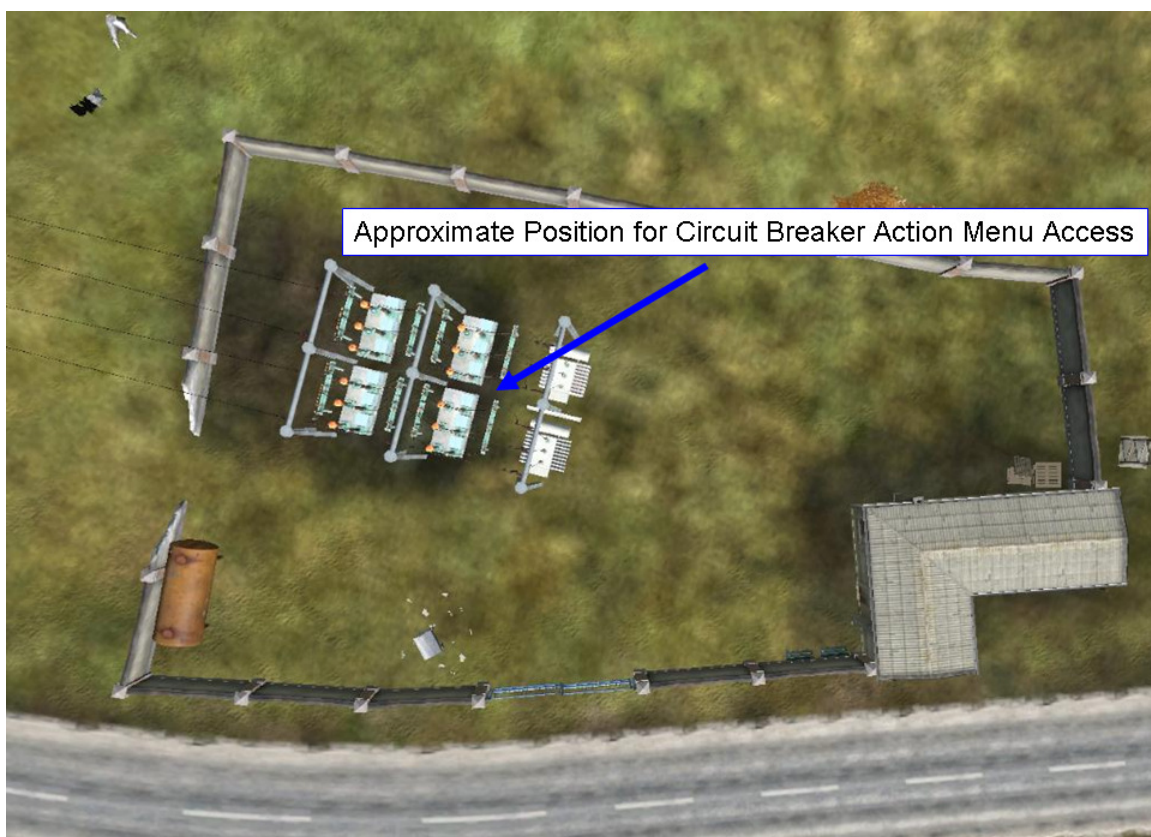


## Solnichniy Substation





### III. Action Menu Circuit Breaker Overview



## IV. Grid Control System Dialog Overview

